



November 1996

EMBARGO: 11:30 AM (CANBERRA TIME) THU 16 JAN 1997

Personal Finance

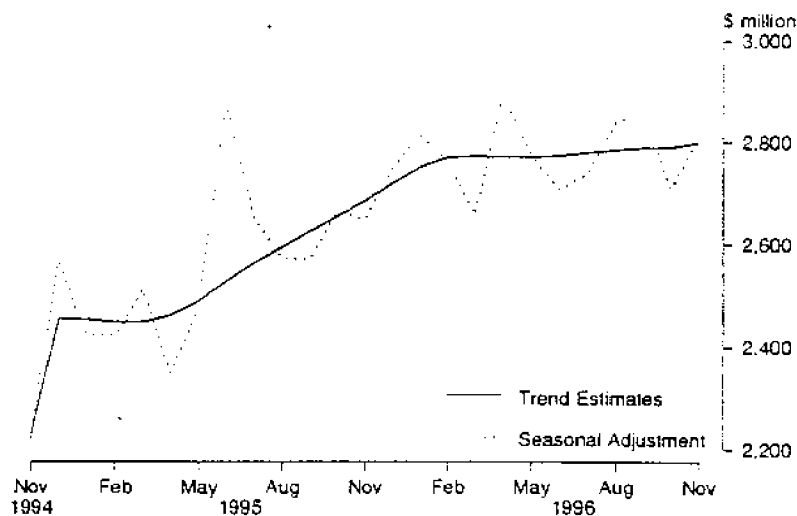
Australia

Data Report

© Commonwealth of Australia 1997

MAIN FEATURES

PERSONAL FINANCE, AUSTRALIA, NOVEMBER 1994 – NOVEMBER 1996



1 The provisional trend estimate for personal finance commitments made by significant lenders in November 1996 was \$2 798.9 million, an increase of \$8.3 million (0.3%) on October 1996 and an increase of \$113.5 million (4.2%) on November 1995.

2 Seasonally adjusted, personal finance commitments were \$2 811.9 million in November 1996, an increase of \$102.7 million (3.8%) on October 1996 and an increase of \$162.2 million (6.1%) on November 1995.

3 In original terms, personal finance commitments in November 1996 were \$2 686.8 million, a decrease of \$329.4 million (10.9%) on October 1996 and a decrease of \$104.5 million (3.7%) on November 1995.

INQUIRIES

- for further information about these and related statistics, contact Phillip Lui on (02) 9268 4263.
- for information about other ABS statistics and services please refer to the back cover.

PERSONAL FINANCE COMMITMENTS: SUMMARY OF MOVEMENTS IN MAJOR AGGREGATES: Original, seasonally adjusted and trend estimates, NOVEMBER 1996

Type of facility	Percentage change from previous month			Percentage change from corresponding month of previous year		
	Original	Seasonally adjusted	Trend	Original	Seasonally adjusted	Trend
	%	%	%	%	%	%
Fixed Loans	-12.5	0.0	-0.5	-13.4	-3.4	-3.6
Revolving Credit	-8.7	9.5	1.5	13.4	22.9	18.7
Total	-10.9	3.8	0.3	-3.7	6.1	4.2

PERSONAL FINANCE COMMITMENTS: MAJOR AGGREGATES: Original, seasonally adjusted and trend estimates

Month	Commitments under fixed loan facilities			Commitments under revolving credit facilities			Total commitments		
	Original	Seasonally adjusted	Trend	Original	Seasonally adjusted	Trend	Original	Seasonally adjusted	Trend
	\$ million	\$ million	\$ million	\$ million	\$ million	\$ million	\$ million	\$ million	\$ million
1995 —									
September	1 627.9	1 720.5	1 695.6	848.9	849.5	930.6	2 476.8	2 570.0	2 626.2
October	1 660.6	1 716.0	1 713.4	1 016.5	947.7	942.8	2 677.0	2 663.7	2 656.1
November	1 782.3	1 688.8	1 739.8	1 009.0	960.8	945.6	2 791.3	2 649.7	2 685.4
December	1 575.6	1 772.9	1 776.5	951.2	975.7	943.1	2 526.8	2 748.6	2 719.6
1996 —									
January	1 729.9	1 805.9	1 813.6	824.9	1 007.1	937.5	2 554.8	2 813.0	2 751.1
February	1 849.1	1 871.5	1 833.0	771.4	891.8	936.4	2 620.5	2 763.3	2 769.4
March	1 909.9	1 847.8	1 826.0	728.8	810.3	946.1	2 638.7	2 658.1	2 772.0
April	1 686.1	1 850.3	1 799.5	938.9	1 039.6	970.8	2 625.0	2 889.9	2 770.3
May	1 925.4	1 766.7	1 764.7	1 095.2	1 007.8	1 005.3	3 020.7	2 774.5	2 770.0
June	1 701.5	1 647.2	1 733.4	1 143.1	1 060.0	1 039.7	2 844.6	2 707.2	2 773.1
July	1 870.4	1 614.6	1 713.6	1 352.9	1 122.8	1 066.2	3 223.3	2 737.5	2 779.8
August	1 696.2	1 790.4	1 703.5	1 091.2	1 050.7	1 081.7	2 787.4	2 841.1	2 785.2
September	1 687.8	1 797.6	1 695.6	1 057.1	1 060.1	1 093.8	2 744.9	2 857.7	2 789.4
October	1 763.7	1 930.5	1 685.0	1 252.5	1 078.7	1 105.6	3 016.2	2 709.2	2 790.6
November	1 543.0	1 830.6	1 676.8	1 143.8	1 181.3	1 122.1	2 686.8	2 811.9	2 798.9

TABLE 1 — PERSONAL FINANCE COMMITMENTS — NOVEMBER 1996
(\$ million)

Purpose of commitment by type of facility	Type of lender				Total
	All banks	Credit co-operatives	Finance companies	Others	
AUSTRALIA					
Commitments under fixed loan facilities					
Purchase of					
Motor cars and station wagons					
New	59.1	20.8	102.9	24.5	207.3
Used	150.6	61.0	178.5	7.9	398.0
Other motor vehicles	17.3	1.4	14.2	0.1	32.9
Motor cycles, etc	7.3	2.7	4.5		14.6
Boats, caravans and trailers	13.5	3.4	21.2		38.1
Individual residential blocks of land	86.1	5.0	0.5	3.0	94.6
Household and personal goods	28.1	14.4	7.4	9.2	59.1
Owner-occupied housing (unsecured)					
Purchase and construction of dwellings	14.4	11.9	3.6		30.0
Alterations and additions to dwellings(a)	25.3	14.0	0.8	0.1	40.2
Travel and holidays	14.0	8.4	2.8		25.3
Debt consolidation	98.2	32.5	7.4	1.4	139.5
Refinancing	201.7	18.4	15.6	0.5	236.3
Other	135.2	54.3	30.8	6.9	227.1
Total fixed loan commitments	850.7	248.3	390.2	53.8	1,543.0
Commitments under revolving credit facilities(b)					
New and increased credit limits					
Secured	495.5	3.6	1.3		500.4
Unsecured	511.6	54.5	30.5	26.9	643.4
Total revolving credit commitments	1,027.1	58.0	31.8	26.9	1,143.8
Total personal finance commitments	1,877.8	306.3	422.0	80.7	2,686.8
STATISTICS					
New South Wales	651.6	163.3	132.5	26.0	973.5
Victoria	459.1	30.3	86.4	22.2	598.0
Queensland	348.6	35.7	88.4	19.3	492.0
South Australia	127.2	30.7	28.9	4.1	190.9
Western Australia	207.2	22.1	66.6	5.4	301.4
Tasmania	29.7	10.7	n.p.	n.p.	48.8
Northern Territory	16.5	5.0	n.p.	n.p.	29.2
Australian Capital Territory	17.8	8.5	5.9	0.8	53.0

(a) Includes commitments to refinance loans where the principal purpose is for alterations and/or additions to dwellings. (b) Includes credit card facilities. (c) From July 1996 finance companies and other lenders data is not available for publication for Tasmania and the Northern Territory, but is included in totals where appropriate.

TABLE 2 — PERSONAL FINANCE COMMITMENTS — ALL LENDERS

YEARS	Commitments under fixed loan facilities for -										Owner-occupied housing (unsecured)					
	Purchase of					Purchase of					Household and personal goods \$ m	Purchase and alterations and additions to dwellings \$ m	Purchase and alterations and additions to dwellings \$ m			
	Motor cars and station wagons		Other motor vehicles		Total motor vehicles	Boats, catamarans and trailers		Individual residential blocks of land	Household and personal goods							
Number	\$ m	Number	\$ m	Number	\$ m	Number	\$ m	Number	\$ m	Number	\$ m	Number	\$ m	Number	\$ m	
AUSTRALIA																
1993 1994	109,568	2,011.3	436,469	4,470.0	105.5	328.8	6,948.5	189.3	1026.9	532.2	184.4	345.9				
1994 1995	131,105	2,633.7	467,665	5,135.5	127.6	400.2	8,297.0	222.2	1063.1	541.4	239.8	386.3				
1995 1996	129,693	2,501.9	489,164	5,556.2	151.1	433.5	8,645.7	222.0	1120.1	564.7	291.5	412.4				
1995																
September	9,749	188.3	39,332	440.9	12.7	37.0	678.9	17.7	94.0	42.6	24.5	31.3				
October	10,491	201.5	39,821	451.5	12.9	39.5	705.5	17.6	102.0	41.6	21.1	32.1				
November	11,394	220.5	42,702	468.6	13.3	38.1	740.4	19.2	105.3	49.6	24.4	37.8				
December	10,284	198.2	34,683	397.2	11.5	32.2	639.0	18.0	87.1	43.3	24.7	35.8				
1996																
January	11,078	210.6	41,819	484.7	11.7	35.6	742.6	21.4	89.3	44.1	22.9	34.1				
February	10,926	208.6	42,358	479.1	13.4	34.0	735.2	21.8	90.3	48.3	25.3	37.8				
March	11,131	217.4	42,371	484.0	14.6	35.8	751.8	21.0	80.8	52.3	27.5	38.7				
April	10,574	207.6	38,835	445.7	12.9	35.0	701.2	18.0	83.0	49.5	27.6	35.8				
May	12,411	239.8	43,794	508.8	13.9	38.8	801.3	19.2	95.9	59.3	22.7	39.4				
June	11,443	221.5	38,460	447.4	11.7	35.4	716.0	16.4	78.4	52.7	19.7	31.0				
July	11,665	228.6	40,745	481.4	13.6	40.1	763.7	19.6	98.9	61.9	25.7	33.4				
August	10,865	212.8	39,165	462.8	13.7	38.2	727.5	20.8	92.4	58.2	27.6	32.6				
September	10,486	211.5	37,588	440.0	14.0	35.6	701.1	21.5	80.3	52.1	26.7	32.8				
October	11,105	221.6	40,412	475.6	16.0	41.1	757.3	23.1	101.3	60.1	29.1	42.0				
November	10,159	207.3	33,905	398.1	14.6	32.9	652.9	38.1	94.6	59.1	30.0	40.2				
STATES - OCTOBER 1996																
NSW	1,955	76.1	11,392	131.1	4.8	12.1	226.3	7.4	25.9	22.1	16.2	19.9				
Vic	2,677	58.9	9,841	118.9	3.4	7.7	188.9	3.6	25.0	14.4	5.1	8.2				
Qld	1,916	36.8	8,107	91.4	3.4	7.6	141.1	5.8	25.4	9.3	2.9	6.5				
SA	712	14.8	3,696	40.1	1.3	3.6	59.9	1.6	4.6	4.4	1.4	2.7				
WA	1,347	28.6	5,054	65.1	1.9	8.5	104.1	3.2	15.4	7.2	2.0	2.7				
Tas	159	2.2	1,177	10.8	0.4	0.5	13.9	0.7	2.1	1.5	0.7	1.1				
NT	112	2.4	519	7.1	0.3	0.4	10.2	0.5	1.7	0.4	0.1	0.1				
ACT	227	4.5	594	7.2	0.5	0.7	12.8	0.2	1.3	0.7	0.5	0.9				
STATES - NOVEMBER 1996																
NSW	3,812	71.6	10,523	120.8	3.8	9.7	207.9	6.8	26.6	25.4	16.2	19.3				
Vic	2,311	51.3	7,844	92.9	3.2	6.3	153.8	3.2	21.5	13.2	5.3	7.9				
Qld	1,741	42.9	6,371	73.6	2.3	5.3	114.1	16.5	26.3	7.8	3.7	6.4				
SA	673	11.4	3,248	35.5	2.7	2.3	54.9	1.4	3.4	3.5	0.8	2.9				
WA	1,156	25.9	4,037	51.9	1.8	7.1	88.7	8.4	12.7	6.9	1.6	2.2				
Tas	141	2.2	971	9.4	0.3	1.4	13.3	0.6	1.6	1.4	0.7	1.1				
NT	130	3.0	434	5.6	0.3	0.2	9.0	0.9	1.2	0.4	0.2	0.1				
ACT	195	4.1	477	6.3	0.2	0.6	11.2	0.3	1.1	0.6	1.5	0.5				

(a) Includes commitments to refinance loans where the principal purpose is for alterations and/or additions to dwellings.

TABLE 2 — PERSONAL FINANCE COMMITMENTS — ALL LENDERS — continued
(\$ million)

YEARS	Commitments under fixed loan facilities for (cont.)										Commitments under revolving credit facilities(a)					Total fixed loans and revolving credit commitments
	Travel and holidays	Debt consolidation	Refinancing	Other	Total fixed loan commitments during period	New and increased credit limits during period		Cancellations and reductions of credit limits during period		Credit limits at end of period		Used				
						Secured	Unsecured	Total	Secured	Unsecured	Total					
AUSTRALIA																
1993-1994	289.6	1,658.5	2,994.1	2,386.9	16,556.2	2,718.6	6,178.3	8,896.9	7,203.4	37,792.1	16,060.7	25,453.2				
1994-1995	301.0	1,502.4	3,466.2	2,613.4	18,623.0	4,090.9	5,800.0	9,890.9	7,326.1	40,523.9	16,766.8	28,513.9				
1995-1996	326.8	1,871.9	4,154.1	3,120.7	20,929.9	4,155.0	7,296.4	11,451.4	7,911.8	44,481.5	18,052.1	32,381.3				
1995	22.5	148.6	334.3	233.6	1,627.9	396.2	452.7	848.9	732.0	41,503.5	16,872.4	2,476.8				
September	23.8	151.3	333.2	232.4	1,660.6	270.8	745.7	1,016.5	944.8	41,582.2	16,711.0	2,677.0				
October	24.9	178.5	353.2	248.9	1,783.3	312.2	696.8	1,009.0	597.1	42,007.7	16,900.5	2,791.3				
December	23.1	147.0	322.3	235.3	1,575.6	265.0	686.2	951.2	653.3	42,322.4	17,199.9	2,526.8				
1996	21.7	140.2	333.4	280.2	1,729.9	301.5	523.4	824.9	659.2	42,380.2	17,422.8	2,554.8				
January	27.0	160.0	378.0	325.4	1,849.1	318.6	452.8	771.4	496.8	42,749.8	17,423.0	2,620.5				
February	32.1	175.0	393.3	337.2	1,909.9	273.7	455.0	728.8	605.9	42,893.2	17,406.4	2,638.7				
March	31.1	150.1	320.2	269.6	1,686.1	304.9	634.1	938.9	625.3	43,336.6	17,698.2	2,625.0				
April	36.4	170.4	363.2	317.8	1,925.4	405.9	689.3	1,095.2	495.4	43,931.6	17,806.2	3,020.7				
May	34.4	151.7	308.5	290.7	1,701.5	446.6	696.5	1,143.1	595.1	44,481.5	18,052.1	2,844.6				
June	33.6	173.8	378.2	281.7	1,870.4	600.2	752.7	1,352.9	752.3	45,058.0	18,395.5	3,223.3				
July	29.2	162.3	297.0	248.7	1,696.2	508.1	583.2	1,091.2	581.6	45,586.2	18,373.8	2,787.4				
August	34.7	161.1	281.9	305.6	1,687.8	441.5	615.6	1,057.1	553.0	46,095.0	18,626.1	2,744.9				
September	32.0	153.5	294.8	270.4	1,763.7	508.4	744.0	1,252.5	768.1	46,727.7	18,863.9	3,016.2				
October	25.3	139.5	276.3	227.1	1,543.0	500.4	643.4	1,143.8	480.9	47,439.0	19,182.7	2,686.8				
STATES: OCTOBER 1996																
NSW	11.9	50.6	107.4	104.6	594.4	200.7	239.4	440.1	270.6	17,801.4	7,267.3	1,034.5				
Vic.	5.3	33.9	62.8	59.6	407.1	120.3	188.4	308.7	151.2	11,049.6	4,507.6	715.8				
Qld	6.6	31.0	57.2	49.2	335.1	78.9	140.8	219.8	108.7	8,085.1	3,453.2	554.8				
SA	1.6	12.2	19.6	15.2	123.0	36.7	45.6	82.3	112.0	3,274.6	1,206.0	205.3				
WA	2.9	19.2	31.0	29.6	217.3	45.7	90.3	136.0	99.2	4,314.3	1,601.1	353.3				
Tas.	0.7	2.1	6.5	4.6	34.2	8.4	16.2	24.6	8.8	918.1	316.2	58.8				
NT	0.3	1.2	4.4	3.0	21.9	2.8	7.0	9.8	3.0	273.1	106.7	31.7				
ACT	0.8	4.1	5.9	4.6	30.8	14.9	16.2	31.1	12.7	1,011.5	405.9	61.9				
STATES: NOVEMBER 1996																
NSW	10.5	47.4	85.2	89.4	534.6	202.7	236.2	438.9	172.6	18,079.9	7,368.1	973.5				
Vic.	4.1	29.0	51.3	47.6	337.1	103.5	157.5	260.9	108.1	11,203.2	4,569.5	598.0				
Qld	4.2	29.0	48.4	49.4	295.8	85.9	110.3	196.2	83.6	8,197.9	3,444.5	492.0				
SA	1.7	10.1	14.1	15.8	108.5	43.7	38.7	82.4	35.3	3,321.2	1,215.9	190.9				
WA	3.1	16.5	24.5	25.1	189.9	40.2	71.3	111.5	57.0	4,404.7	1,795.9	301.4				
Tas.	0.6	2.0	5.3	4.1	30.8	7.7	10.4	18.1	7.8	928.4	323.3	48.8				
NT	0.3	1.4	2.9	1.9	18.4	2.7	8.1	10.8	4.9	279.1	105.7	29.2				
ACT	0.6	3.9	4.5	3.8	28.0	14.1	10.9	25.0	11.6	1,024.7	359.8	53.0				

(a) Includes credit card facilities.



For more information . . .

The ABS publishes a wide range of statistics and other information on Australia's economic and social conditions. Details of what is available in various publications and other products can be found in the ABS Catalogue of Publications and Products available from all ABS Offices.

ABS Products and Services

Many standard products are available from ABS bookshops located in each State and Territory. In addition to these products, information tailored to the needs of clients can be obtained on a wide range of media by contacting your nearest ABS Office. The ABS also provides a Subscription Service for standard products and some tailored information services.

National Dial-a-Statistic Line

0055 86 400

Steadycom P/L premium rate 25c/21.4 secs.

This number gives 24-hour access, 365 days a year, for a range of important economic statistics including the CPI.

Internet

<http://www.abs.gov.au>

A wide range of ABS information is available via the Internet, with basic statistics available for each State, Territory and Australia. We also have Key National Indicators, ABS product release details and other information of general interest.

Sales and Inquiries

Keylink STAT.INFO/ABS
X.400 (C:Australia.PUB:Telememo.C:ABS.FN:STAT,SN:INFO)
Internet stat.info@abs.telememo.au

National Mail Order Service (06) 252 5249
Subscription Service 1800 02 0608

	Information Inquiries	Bookshop Sales
SYDNEY	(02) 9268 4611	9268 4620
MELBOURNE	(03) 9615 7755	9615 7755
BRISBANE	(07) 3222 6351	3222 6350
PERTH	(09) 360 5140	360 5307
ADELAIDE	(08) 8237 7100	8237 7582
HOBART	(03) 6220 5800	6205 800
CANBERRA	(06) 252 6627	207 0326
DARWIN	(08) 8943 2111	8943 2111

Information Services, ABS, PO Box 796, Sydney NSW 2001

